

DATE: \_\_\_\_\_  
COMPANY: \_\_\_\_\_  
JOB NAME: \_\_\_\_\_  
SUBMITTED BY: \_\_\_\_\_  
NOTES: \_\_\_\_\_  
\_\_\_\_\_

# ROOF CURB SUBMITTAL #1013437 SEISMIC RATED

AAON RN25

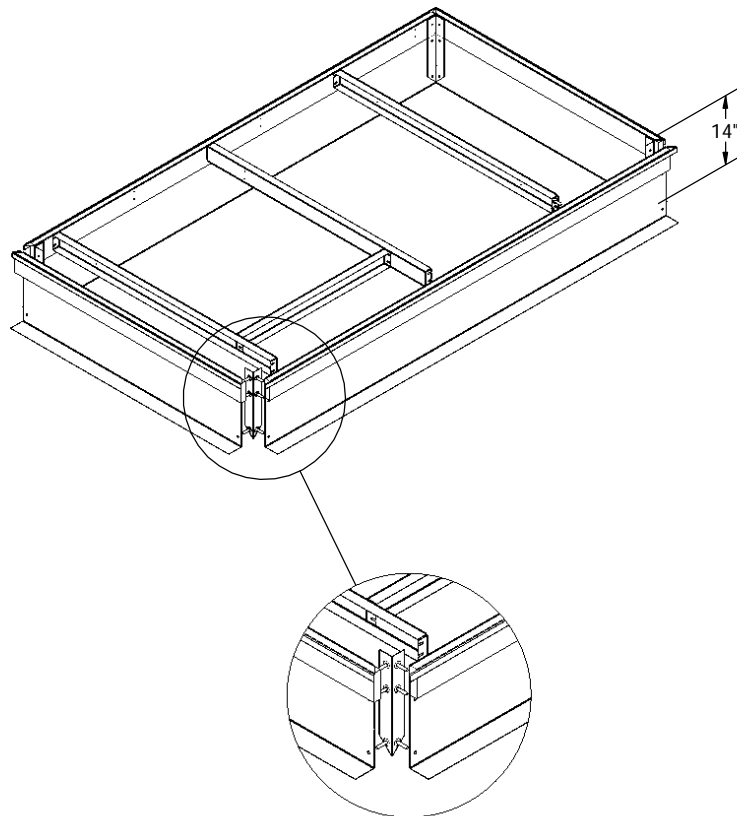
CURB ASSEMBLY NUMBER

1013437

REV:

Drawn By: RTO  
Drawn Date: 1/22/09

**ESTIMATED WEIGHT: 135 LBS.**



DETAIL A

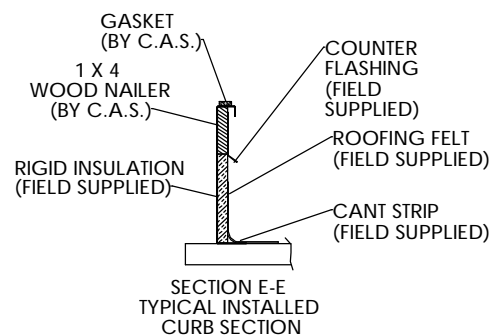
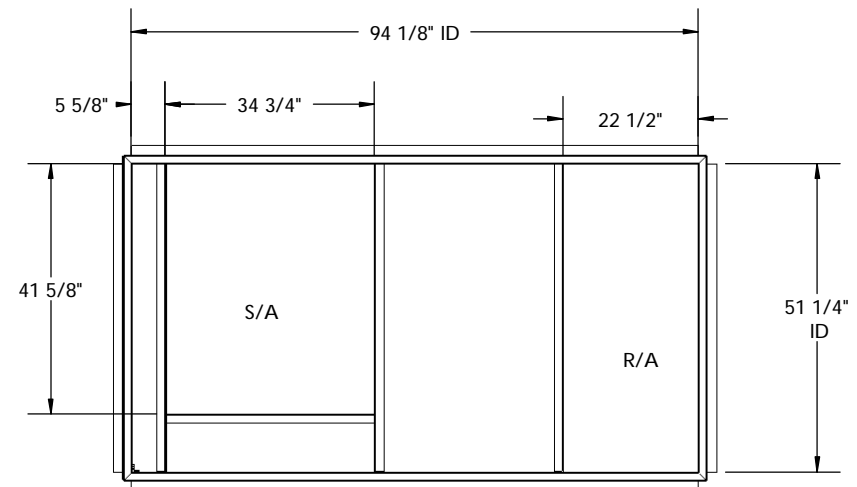
## FEATURES:

MITERED TOP CORNERS

ROOF CURB BODY IS FABRICATED OF HEAVY GAUGE GALVANIZED STEEL.

FULL PERIMETER WOOD NAILER.

PRE-PUNCHED ASSEMBLY HOLES AND HARDWARE INCLUDED FOR DUCT SUPPORT INSTALLATION,  
ROOF CURB IS SHIPPED KNOCKED DOWN.



ROOF CURB IS LABELED WITH RTU# IF APPLICABLE

© 2007 COX ENGINEERING COMPANY  
DBA CAMBRIDGEPORT AIR SYSTEMS. ALL RIGHTS RESERVED. TM

# Cambridgeport

## AIR SYSTEMS, INC.

SALISBURY, MA 01952

PHONE 1-800-648-2872 FAX 1978-462-9189