

© 2007 COX ENGINEERING DBA CAMBRIDGEPORT AIR SYSTEMS.
THE INFORMATION CONTAINED IN THIS DOCUMENT IS PROPRIETARY TO
COX ENGINEERING COMPANY DBA CAMBRIDGEPORT AIR SYSTEMS.
THIS DOCUMENT OR THE INFORMATION CONTAINED IN WHOLE OR IN PART
MAY NOT BE ISSUED TO ANOTHER PARTY WITHOUT WRITTEN CONSENT AND
AUTHORIZATION FROM CAMBRIDGEPORT.

Approval Block

Date: _____

Company: _____

Job Name: _____

Approved By: _____

Notes: _____

ROOF CURB SUBMITTAL # 1015850

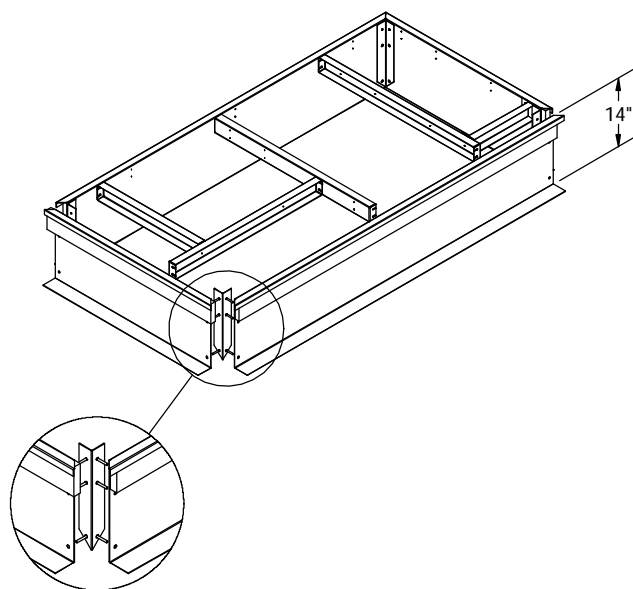
AAON RN10 STD A-CAB

1015850

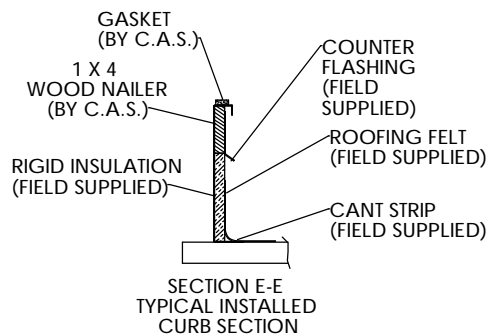
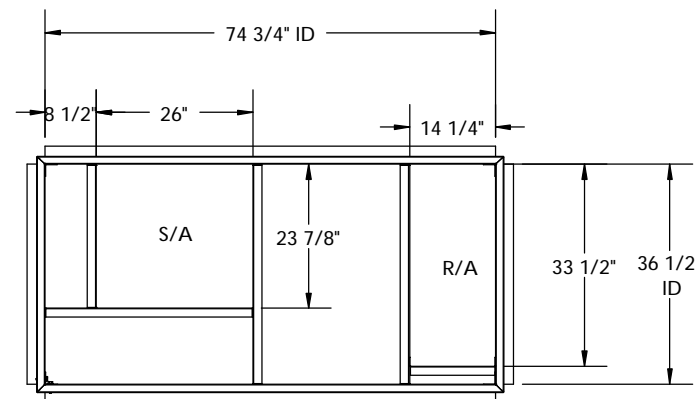
Drawn Date: 3/23/10 Rev.

Drawn By: RTO

Estimated Weight: 89 LBS.



DETAIL A



FEATURES:

1. Mitered Corners.
2. Gasketing Provided for Unit to Curb Sealing.
3. Roof Curb is Fabricated of Heavy Gauge Galvanized Steel.
4. Full Perimeter Wood Nailer.
5. Pre-Punched Holes and Hardware Included for Curb Assembly.
6. Roof Curb is Shipped Knocked Down.
7. Roof Curb is Labeled with RTU # if Applicable.

Cambridgeport

NORTH 8 Fanaras Drive Salisbury Industrial Park Salisbury MA 01952	1-800-648-2872 1-877-648-2872	SOUTH 3529 Lamar Ave. Lamar Industrial park Memphis TN 38118
---	----------------------------------	---

HVAC Accessories & Engineered Systems