

© 2007 COX ENGINEERING DBA CAMBRIDGEPORT AIR SYSTEMS.
THE INFORMATION CONTAINED IN THIS DOCUMENT IS PROPRIETARY TO
COX ENGINEERING COMPANY DBA CAMBRIDGEPORT AIR SYSTEMS.
THIS DOCUMENT OR THE INFORMATION CONTAINED IN WHOLE OR IN PART
MAY NOT BE ISSUED TO ANOTHER PARTY WITHOUT WRITTEN CONSENT AND
AUTHORIZATION FROM CAMBRIDGEPORT.

Approval Block

Date: _____
Company: _____
Job Name: _____
Approved By: _____
Notes: _____

ROOF CURB SUBMITTAL # 1019132

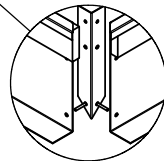
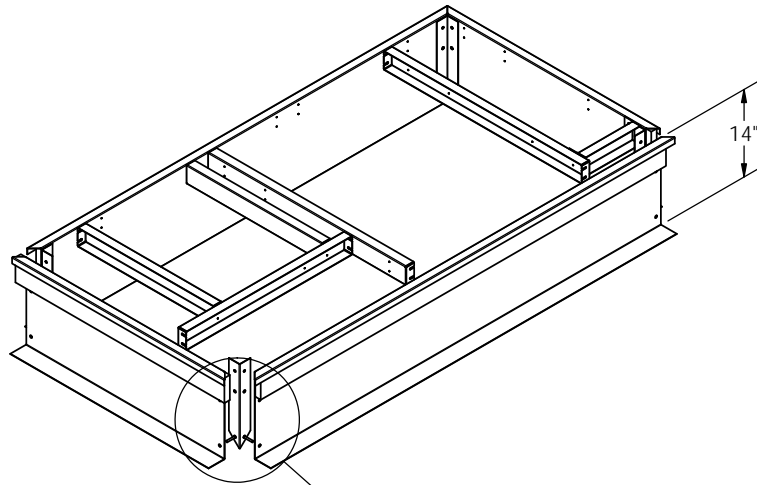
AAON RQ001

1019132

Drawn Date: 6/21/12 Rev.

Drawn By: RTO

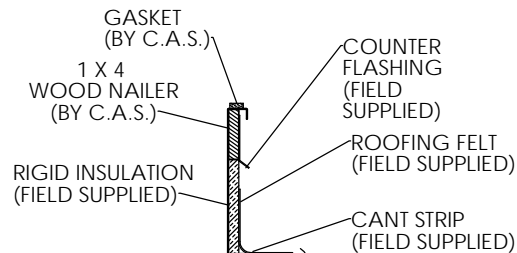
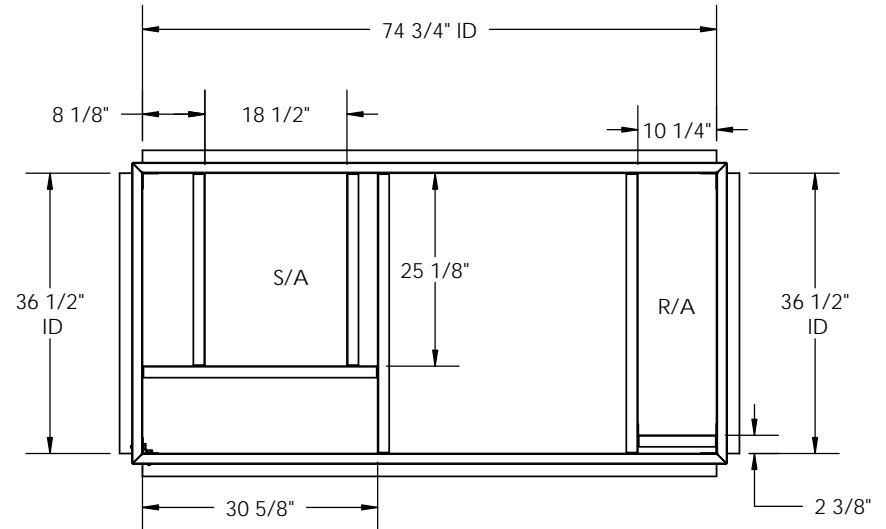
Estimated Weight: 91 LBS.



FEATURES:

1. Mitered Corners.
2. Gasketing Provided for Unit to Curb Sealing.
3. Roof Curb is Fabricated of Heavy Gauge Galvanized Steel.
4. Full Perimeter Wood Nailer.
5. Pre-Punched Holes and Hardware Included for Curb Assembly.
6. Roof Curb is Shipped Knocked Down.
7. Roof Curb is Labeled with RTU # if Applicable.

DETAIL A



SECTION E-E
TYPICAL INSTALLED
CURB SECTION

Cambridgeport

NORTH
8 Fanaras Drive
Salisbury Industrial Park
Salisbury MA 01952

1-800-648-2872
1-877-648-2872

SOUTH
3529 Lamar Ave.
Lamar Industrial park
Memphis TN 38118

HVAC Accessories & Engineered Systems