

SUBMITTAL

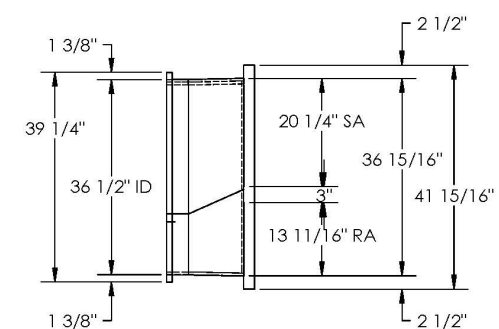
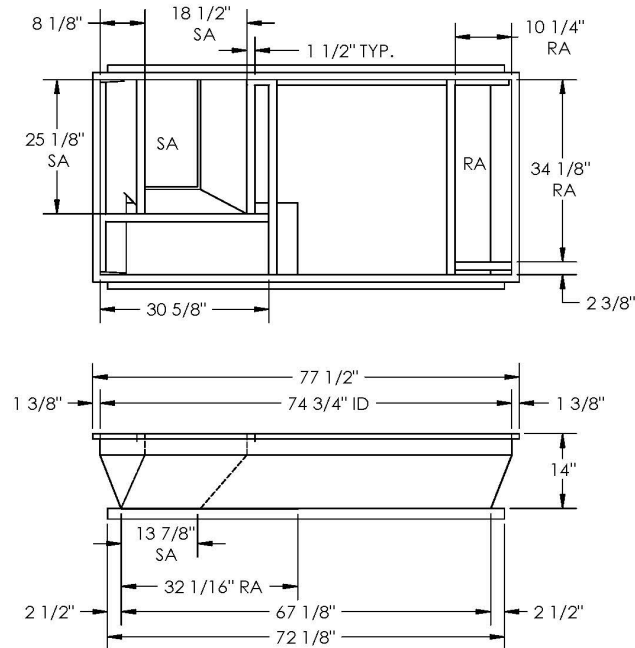
Part Number
2010749

SUBMITTED TO _____
COMPANY _____
JOB NAME _____
EQUIPMENT _____
SIGNATURE _____
DATE _____

© 2007 COX ENGINEERING DBA CAMBRIDGEPORT AIR SYSTEMS.
THE INFORMATION CONTAINED IN THIS DOCUMENT IS PROPRIETARY TO
COX ENGINEERING COMPANY DBA CAMBRIDGEPORT AIR SYSTEMS.
THIS DOCUMENT OR THE INFORMATION CONTAINED IN WHOLE OR IN PART
MAY NOT BE ISSUED TO ANOTHER PARTY WITHOUT WRITTEN CONSENT AND
AUTHORIZATION FROM CAMBRIDGEPORT.

SUBMITTAL

REVISIONS			
ZONE	REV.	DESCRIPTION	DATE
			APPROVED



FEATURES:

1. ONE PIECE WELDED CONSTRUCTION
2. CURB ADAPTER MADE OF HEAVY GAUGE GALVANIZED STEEL.
3. ALL WELDS ARE COATED WITH A GALVANIZED COMPOUND.
4. GASKETING IS PROVIDED FOR UNIT TO CURB ADAPTER SEALING.
5. CURB ADAPTER IS FULLY INSULATED.
6. SUPPLY TRANSITION AND RETURN PLENUM INCLUDED.

Approved By: _____

Date: _____

MATERIAL: 18GA.(0.0516) 116.2 LBS.

FEATURES

- ONE PIECE WELDED CONSTRUCTION
- FACTORY INSTALLED SUPPLY TRANSITIONS
- FULLY INSULATED
- DESIGNED FOR EVEN WEIGHT DISTRIBUTION
- FABRICATED OF HEAVY GAUGE G90 GALVANIZED STEEL
- ALL WELDS SPRAYED WITH GALVANIZING COMPOUND
- GASKET PROVIDED FOR UNIT TO ADAPTER SEALING

Cambridgeport			
4 CARLETON DRIVE GEORGETOWN, MA 01833			
HVAC Accessories & Engineered Systems			
UNLESS OTHERWISE SPECIFIED	CUST. TABCO	DRAWN	CD/M
TOLERANCES	DATE: 10/11/11	DESCRIPTIONS	
DECIMALS = ± .003	CARRIER 50TJQ006		
FRACTIONS = ± 1/16	AAON RQ005		
ANGLES = ± 1°	2010749	ASS'Y, ADAPTER	
MATERIAL CONDITIONS:	DETAIL OF	PART NO.	REV.
REMOVE ALL BURRS & SHARP EDGES	2010749	2010749	
ALL DIMENSIONS ARE O.D.	SHEET 1 OF 1		

CAMBRIDGEPORT STRONGLY RECOMMENDS CONFIRMING THE DIMENSIONS ON THIS SUBMITTAL

CURB ADAPTERS ARE BASED ON UNIT MANUFACTURERS STANDARD CURB DIMENSIONS.
CAMBRIDGEPORT CANNOT BE RESPONSIBLE FOR ANY DEVIATIONS FROM FACTORY DIMENSIONS OR INCORRECT MODEL NUMBERS.