

# Cambridgeport

## SUBMITTAL

Part Number  
2015779

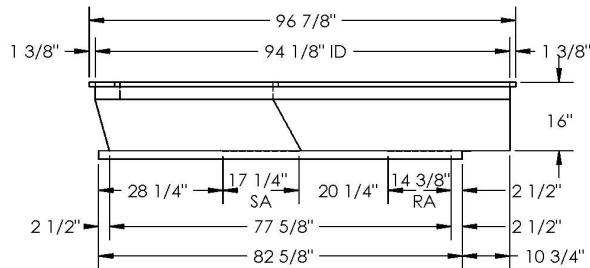
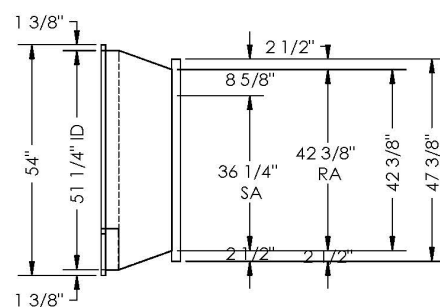
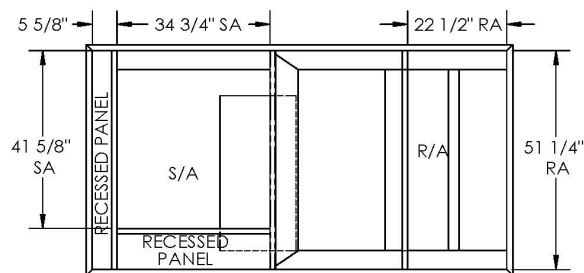
SUBMITTED TO \_\_\_\_\_  
COMPANY \_\_\_\_\_  
JOB NAME \_\_\_\_\_  
EQUIPMENT \_\_\_\_\_  
SIGNATURE \_\_\_\_\_  
DATE \_\_\_\_\_

© 2018 COX ENGINEERING DBA CAMBRIDGEPORT AIR SYSTEMS.  
THE INFORMATION CONTAINED IN THIS DOCUMENT IS PROPRIETARY TO  
COX ENGINEERING COMPANY DBA CAMBRIDGEPORT AIR SYSTEMS.  
THIS DOCUMENT OR THE INFORMATION CONTAINED IN WHOLE OR IN PART  
MAY NOT BE ISSUED TO ANOTHER PARTY WITHOUT WRITTEN CONSENT AND  
AUTHORIZATION FROM CAMBRIDGEPORT.

## SUBMITTAL

### REVISIONS

ZONE	REV.	DESCRIPTION	DATE	APPROVED
------	------	-------------	------	----------



### FEATURES:

1. ONE PIECE WELDED CONSTRUCTION
2. CURB ADAPTER MADE OF HEAVY GAUGE GALVANIZED STEEL.
3. ALL WELDS ARE COATED WITH A GALVANIZED COMPOUND.
4. GASKETING IS PROVIDED FOR UNIT TO CURB ADAPTER SEALING.
5. CURB ADAPTER IS FULLY INSULATED.
6. SUPPLY TRANSITION AND RETURN PLENUM INCLUDED.

Approved By: \_\_\_\_\_

Date: \_\_\_\_\_

**MATERIAL: 18GA.(0.0516) 165.6 LBS.**

## FEATURES

- ONE PIECE WELDED CONSTRUCTION
- FACTORY INSTALLED SUPPLY TRANSITIONS
- FULLY INSULATED
- DESIGNED FOR EVEN WEIGHT DISTRIBUTION
- FABRICATED OF HEAVY GAUGE G90 GALVANIZED STEEL
- ALL WELDS SPRAYED WITH GALVANIZING COMPOUND
- GASKET PROVIDED FOR UNIT TO ADAPTER SEALING

Cambridgeport				4 CARLETON DRIVE GEORGETOWN, MA 01833 1-800-648-CURB(2872) 1-978-465-8481	
HVAC Accessories & Engineered Systems					
UNLESS OTHERWISE SPECIFIED	CUST:	DRAWN	BY	DESCRIPTION	
TOLERANCES:	CUST:	DATE:	04/25/19		
DECIMALS = ± .003 FRACTIONS = ± 1/16 ANGLES = ± 1°	TRANE YCD090-120C (022)			ASS'Y, ADAPTER	
MATERIAL CONDITIONS:	NEW AAON RN025 STD.				
REMOVE ALL BURRS & SHARP EDGES	SUBMITTAL: 47611				
ALL DIMENSIONS ARE O.D.	NO. 2015779	SHEET 1	OF 1	PART NO. 2015779	REV.

## CAMBRIDGEPORT STRONGLY RECOMMENDS CONFIRMING THE DIMENSIONS ON THIS SUBMITTAL

CURB ADAPTERS ARE BASED ON UNIT MANUFACTURERS STANDARD CURB DIMENSIONS.  
CAMBRIDGEPORT CANNOT BE RESPONSIBLE FOR ANY DEVIATIONS FROM FACTORY DIMENSIONS OR INCORRECT MODEL NUMBERS.